

M

can natural lighting shape architecture?

A

Sebastian Moreno-Vacca

Architect, founding partner of A2M
AIA, Professor at University
of architecture ULB (BE)

Director FFAST think tank
moreno@a2m.be

Aline Branders

Architect partner of A2M
branders@a2m.be

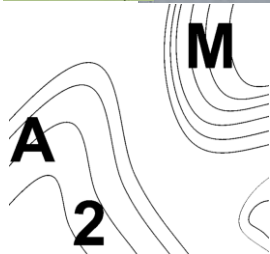
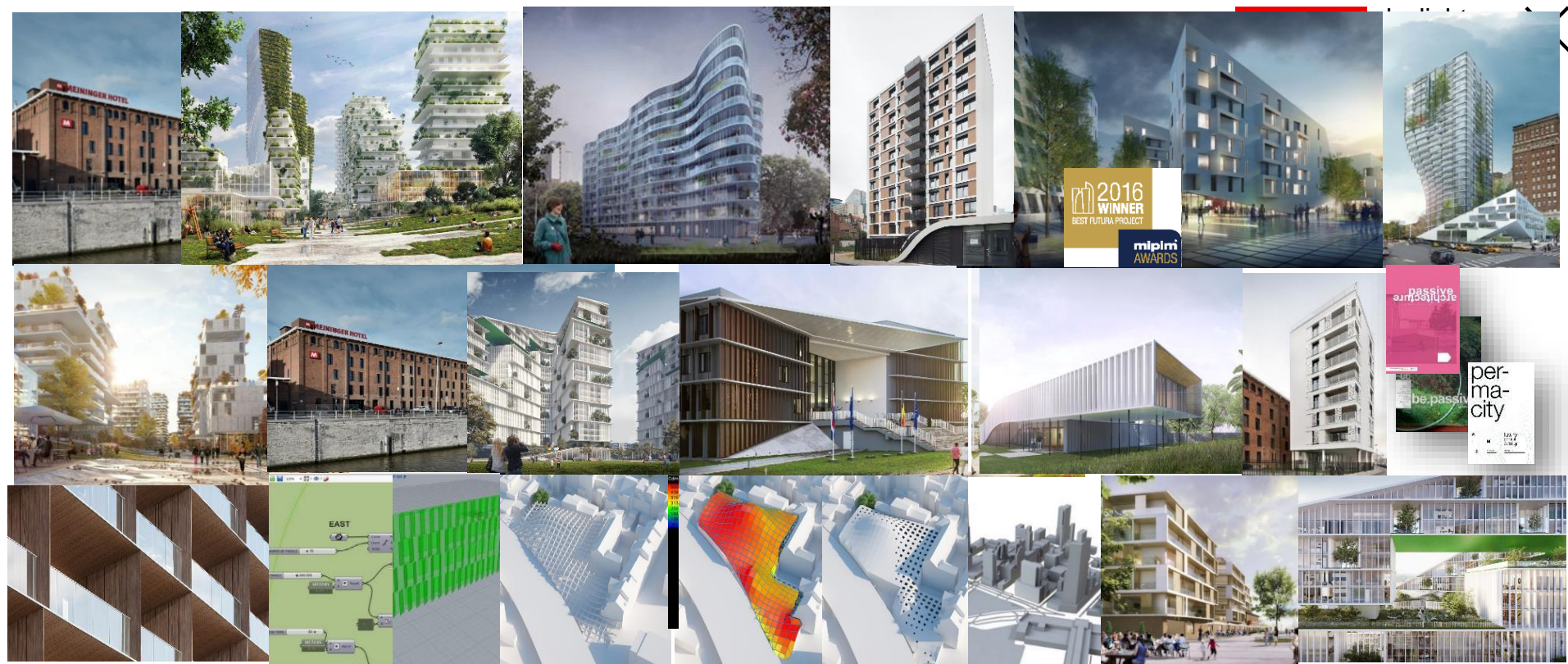
BRU NYC LIS

2

VELUX®

daylight
symposium





we are architects...



design
build



Gross surface m² / Liters of coffee

LINNE-PLANTES

HAREN 03

ANVERS-SIMONS

PAL V

LES HAUTS DE BELLEVUE

CRECHE ILE AUX OISEAUX

BELLE VUE HOTEL

PENICHE

MOL04

FOREST02

IPAM

IPFC DE NIVELLES

CIT BLATON

CPAS FOREST

FBZ FSE (marly)

BONTE

BAGECI

LOUISE 120

MARLOT

MAISON DU PORT

ECO-OFFICE

L'ILE AUX OISEAUX

BXL01

JETTE

CARROSSE

LOCQ

LES GRAND MOULINS

COTE-A-COTE

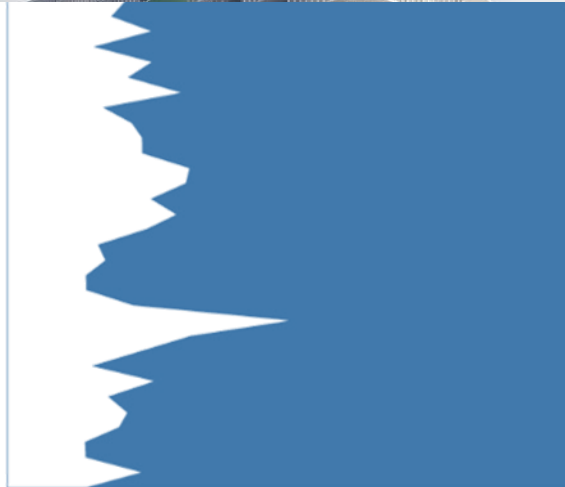
HAREN 02

T&T

BYHHR

NEMO33

ICE CHALLENGE

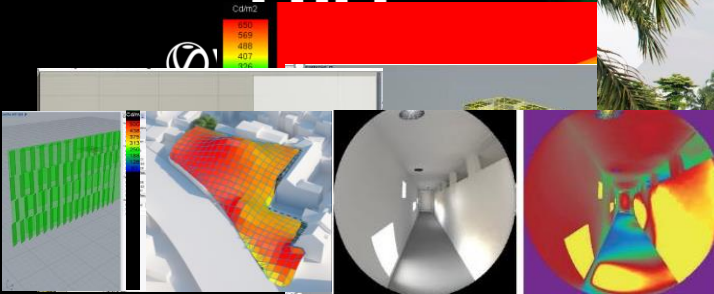


R&D
research
demonstrate

BREEAM®
OpenStudio®

DSI
Dutch School of
Interior
Rhinoceros

PHPP

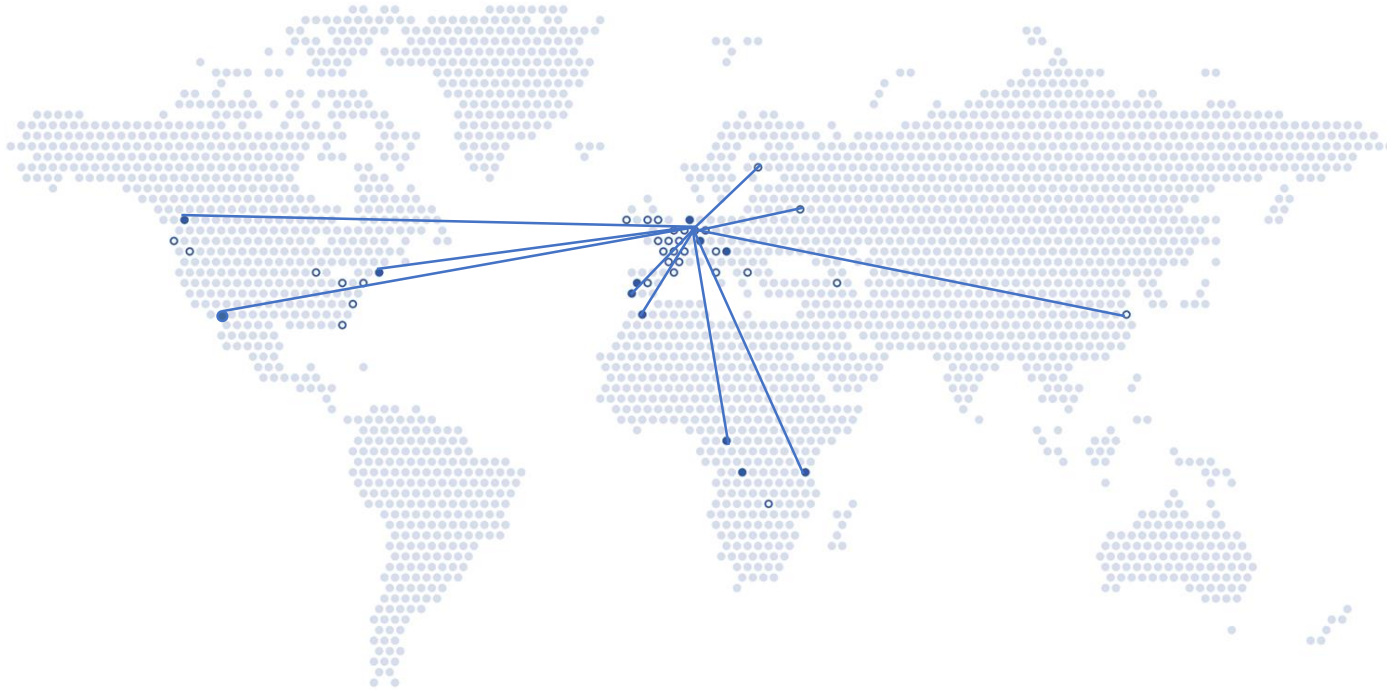


FIFTY SHADES OF GREEN



A2M

VELUX® daylight symposium X



A2M BXL
Belgium

A2M NYC
USA

A2M LIS
Portugal

○ we share ● we build

www.a2m.be

constructed
atmosphere

time

energy

air

parametric

flows

2

natural light

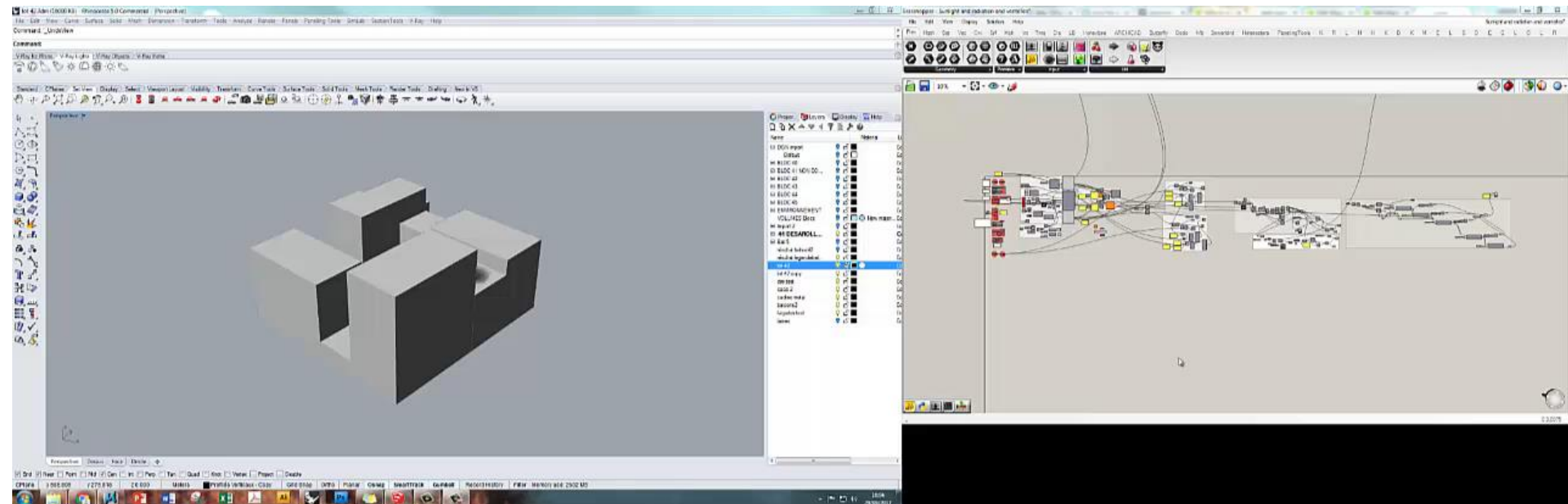
3

RH

Luxembourg – Belval
office
PH, zero energy, CO2
neutral 21 000 m²

A2M

VELUX® daylight
symposium

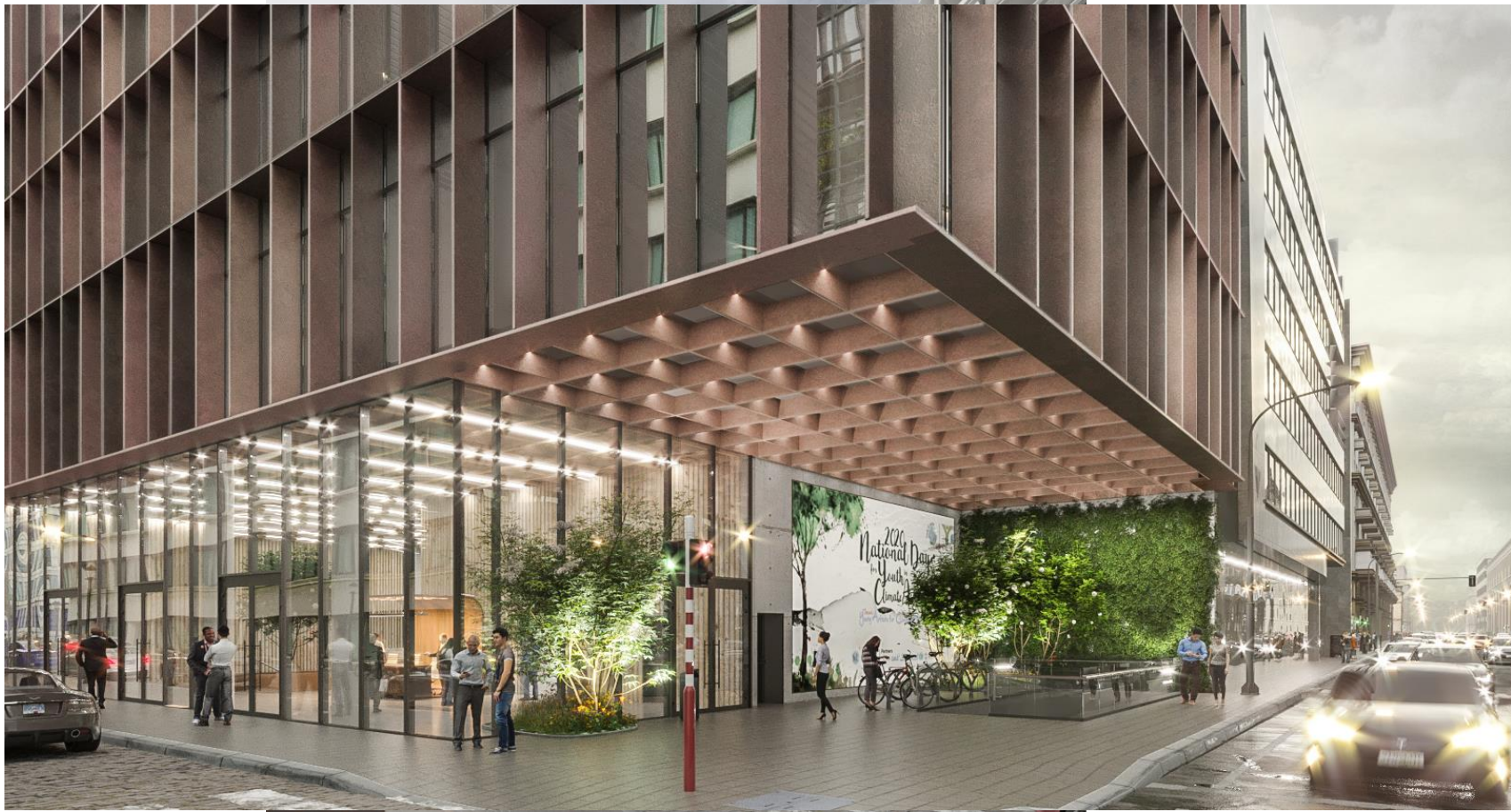




Belgium – Brussels
office
PH, zero energy, CO2
neutral 7 596 m²

A2M

VELUX® daylight
symposium





Grasshopper - Bellard_v2_Ensemblelement*

File Edit View Display Solution Help MetaHopper Panda AutoGraph

Pin Math Set Vec Crv Sur Mesh Int Time Dis Dendro St Grounding Panda Human UI Honeybee Yellow PANEL MANAGER LB Diado Buttefly Vls File Hero Heteroptera Pufferfish Kangaroo2 MetaHopper Kangaroo Proving Ground LunchBox Ivy NGen SMesh Human Vlonbat Bumblebee FabT K M G S F E P I W E D S S F B M R U L

Geometry Primitives Input LM OpenNext

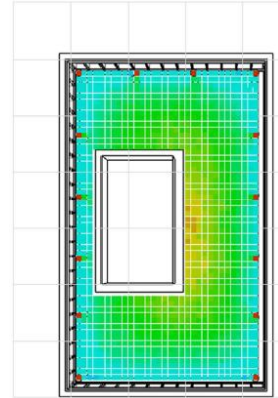
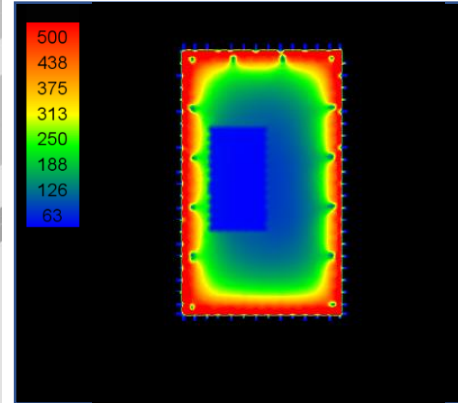
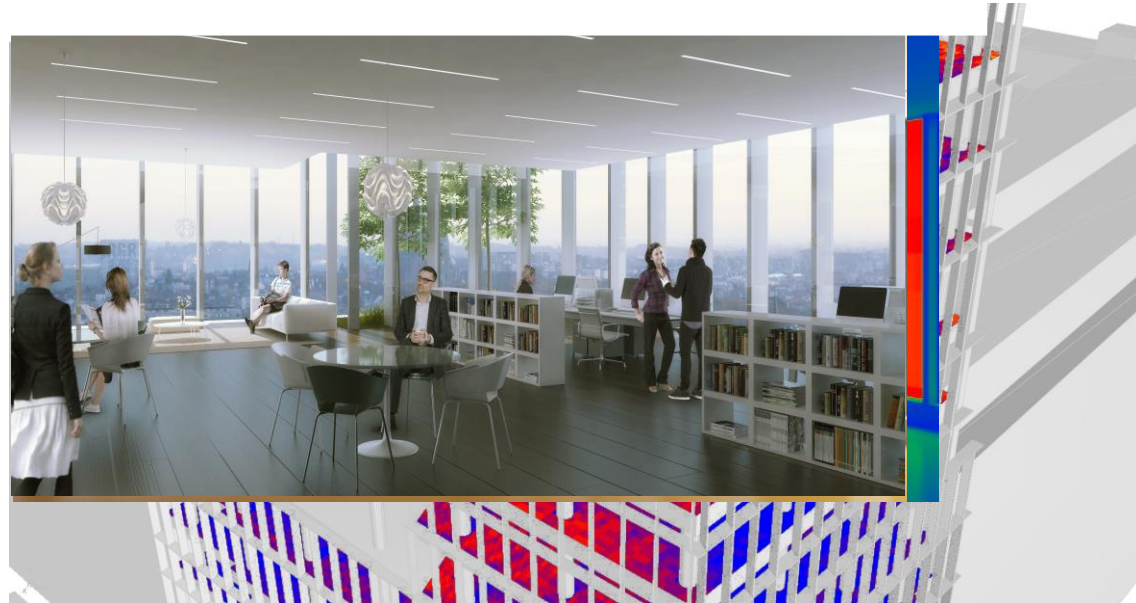
22%

The image displays a complex Grasshopper script for a project named 'Bellard_v2_Ensemblelement'. The script is organized into several columns of components. On the left, there are two large purple Kangaroo2 components, likely used for physics-based simulation. These are connected to a series of smaller components, including MetaHoppers, which are used for multi-objective optimization. The script also features various geometry and logic tools, such as 'Panel Manager', 'LB Diado', 'Buttefly Vls', 'File Hero', 'Heteroptera', 'Pufferfish', 'Kangaroo2', 'MetaHopper', 'Kangaroo', 'Proving Ground', 'LunchBox', 'Ivy', 'NGen', 'SMesh', 'Human', 'Vlonbat', 'Bumblebee', 'FabT', 'K', 'M', 'G', 'S', 'F', 'E', 'P', 'I', 'W', 'E', 'D', 'S', 'S', 'F', 'B', 'M', 'R', 'U', 'L'. The components are interconnected with a dense network of white lines representing data flow. The script is set against a black background, and the interface includes a standard Windows taskbar at the bottom with various application icons and a system clock showing 13-06-13.

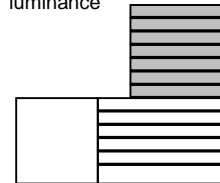
natural lighting simulation shows that we have a very high average level of Lux.

The reflection of the horizontal frame helps to have natural lighting to the central zone.

The luminance ratio (Cd/m²) shows a difference less than 1/20.



luminance



Average 181 Lux
 March 21st, 94
 Lux Dec 21st

Portugal - Lisbon

office

PH, zero energy, CO2

neutral 31 000 m²

A2M

VELUX® daylight
symposium

Canada - Vancouver

residential

PH, zero energy, CO2

neutral 30 000 m²

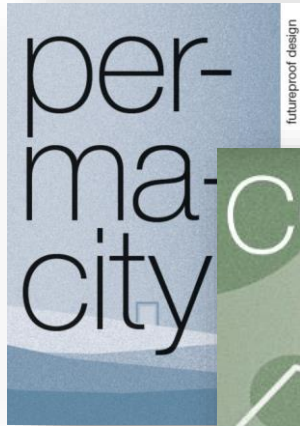
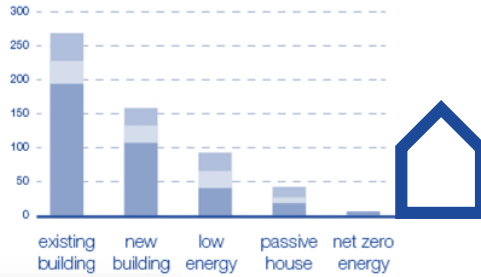




permacity

5 points of
future-proof
architecture

5 points of future-proof architecture



passive house



net zero energy



carbon neutral



autonomous



regen

- ▶ www.a2m.be/practices/permacity/
- ▶ www.a2m.be/practices/cost/

can we regenerate the environment?



Luxembourg - Rout-Léns mixed use



USA, NYC - Governor's Island - mixed use



Luxembourg, Belval - sport center



USA, AZ, EI - residential and congress center

France – Paris

"the Reinvent Paris" project

The first **Climate Neutral District** in France
a complete CO2 neutral development in Paris

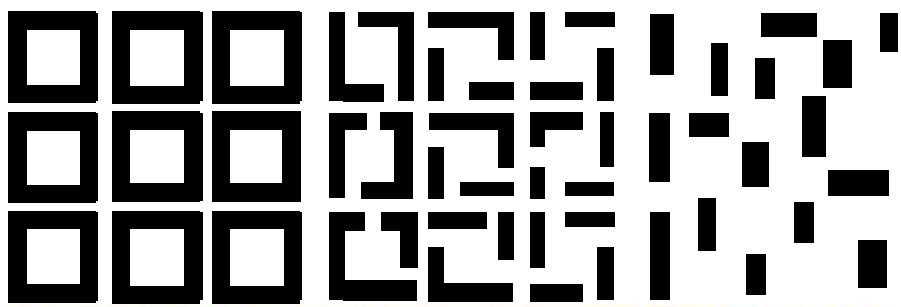
for ATENOR with EAI, OXO

450 000 m²

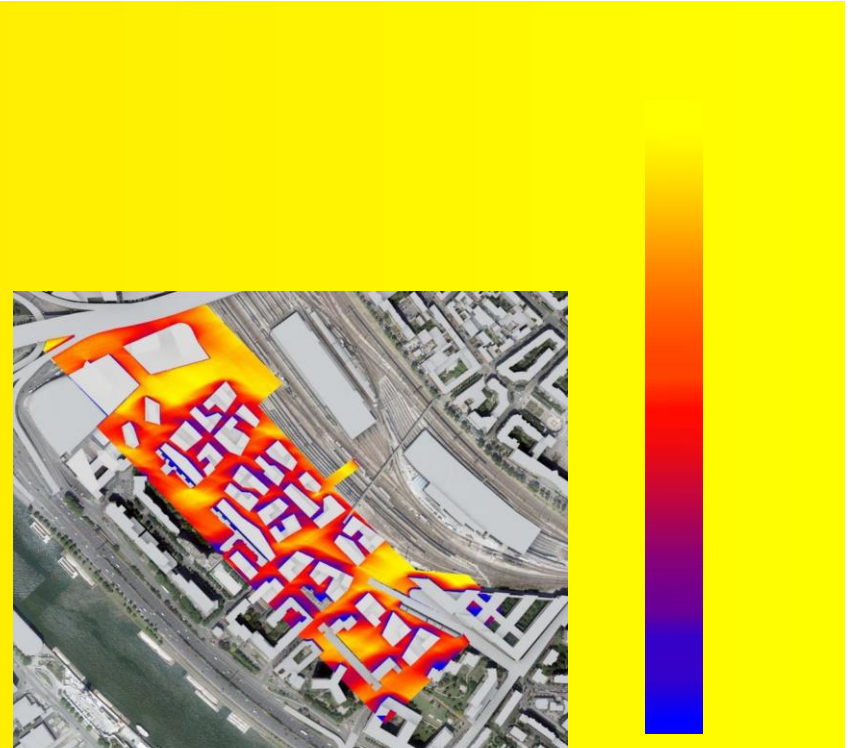
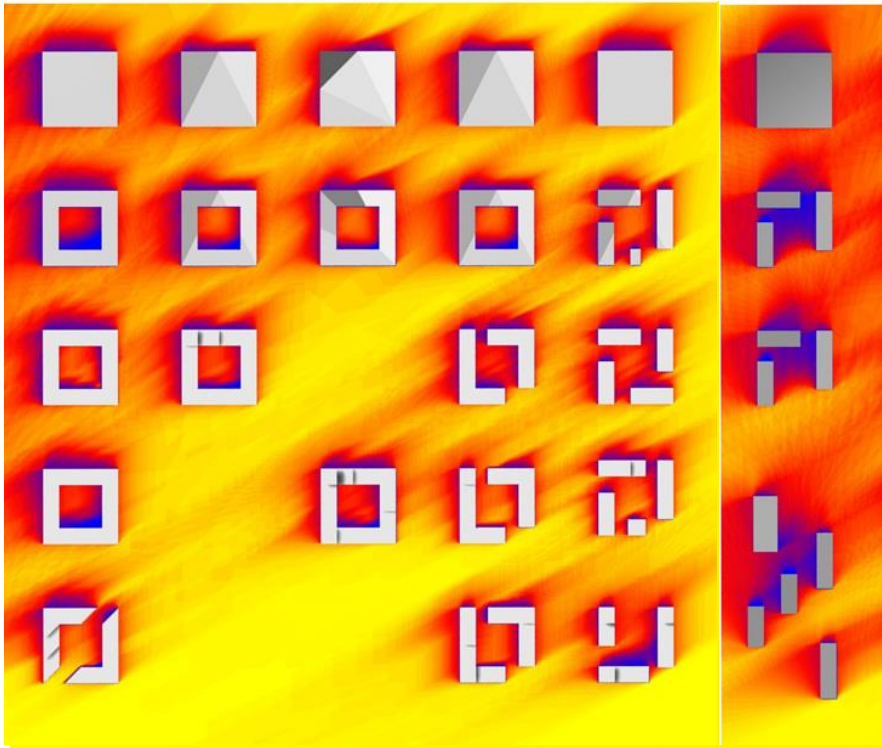
A2M

VELUX® daylight
symposium





district generated with Rhino and grasshopper algorithm









to be or not to be

Shakespeare

to do is to be

Jean-Paul Sartre

do be do be do

Frank Sinatra

do it

A